

Cabinet Member for Health and Wellbeing

Agenda

Date:	Wednesday, 10th November, 2010
Time:	2.00 pm
Venue:	Committee Suite 3, Westfields, Middlewich Road, Sandbach CW11 1HZ

The agenda is divided into 2 parts. Part 1 is taken in the presence of the public and press. Part 2 items will be considered in the absence of the public and press for the reasons indicated on the agenda and at the foot of each report.

PART 1 – MATTERS TO BE CONSIDERED WITH THE PUBLIC AND PRESS PRESENT

1. **Apologies for Absence**

2. **Declarations of Interest**

To provide an opportunity for Members and Officers to declare any personal and/or prejudicial interests in any item on the agenda

3. **Public Speaking Time/Open Session**

In accordance with Procedure Rules Nos.11 and 35 a period of 10 minutes is allocated for members of the public to address the meeting on any matter relevant to the work of the meeting. Individual members of the public may speak for up to 5 minutes but the Chairman will decide how the period of time allocated for public speaking will be apportioned where there are a number of speakers. Members of the public are not required to give notice to use this facility. However, as a matter of courtesy, a period of 24 hours' notice is encouraged.

Members of the public wishing to ask a question at the meeting should provide three clear working days' notice, in writing, in order for an informed answer to be given.

4. **Sandbach Park Redevelopment Plan** (Pages 1 - 36)

To consider a report outlining 'in principle' proposals for the redevelopment of Sandbach Park.

(There are no Part 2 items)

Contact:	Paul Mountford, Democratic Services
Tel:	01270 686472
E-Mail:	paul.mountford@cheshireeast.gov.uk

This page is intentionally left blank

CHESHIRE EAST COUNCIL

Cabinet Member for Health and Wellbeing

Date of Meeting: 10th November 2010

Report of: Guy Kilminster, Head of Health & Wellbeing

Subject/Title: Sandbach Park Redevelopment Plan

Portfolio Holder: Councillor Andrew Knowles

1.0 Report Summary

- 1.1 This report outlines 'in principle' proposals for the redevelopment of Sandbach Park. The details of the proposals are contained within a report drawn up by Ryder Landscape Consultants following extensive consultation with community and park users.
- 1.2 The project is being led by the Sandbach Partnership in conjunction with Sandbach Town Council and Cheshire East Council and its adoption will form the completion of the first phase of the process.

2.0 Recommendations

- 2.1 That the Cabinet Member for Health and Wellbeing approve
 - (1) the 'in principle' adoption of the finalised Concept Plan for Sandbach Park as set out in the Appendix: 'Sandbach Park Final Presentation';
 - (2) that the Concept Plan form the basis for future development within the Park but that such proposals be amended or prioritised in line with available funding and maintenance costs; and
 - (3) that approval be given to Officers to continue to work with the Sandbach Partnership and Sandbach Town Council to implement the proposals, including support for the securing of any additional external funding required to ensure the Plan's completion.

3.0 Reasons for Recommendations

- 3.1 Sandbach Park is much loved by the local community. It is a key local facility as it is located in the town centre adjacent to the market square and the library. Whilst being attractive and heavily used by the community, many of the key facilities are at the end of their useful life and are no longer fit for their purpose.

- 3.2 Funded by Sandbach Town Council, the Sandbach Partnership commissioned Ryder Landscape Consultants to undertake a full review and consultation exercise to provide a future improvement plan for the Park.
- 3.3 Funding for the finalised project would need to include any Section 106 allocations, both current and future.
- 3.4 Following partnership meetings, Cheshire East Council Officers have made clear their priorities, stating that the first aspects of park infrastructure to be addressed need to be access to the park, improvement to the public toilet facilities and improvements to the play provision. The play provision requirement is given even greater priority since the level of facility at the time of writing of the Ryder Report has been reduced following an arson attack which destroyed the main climbing frame.
- 3.5 If the scheme is approved, Officers will work with the main partners (Sandbach Town Council and Sandbach Partnership) to identify the best way to drive the project forward. Whilst Officer time continues to be a limited resource, the aim will be to find an appropriate mechanism to deliver on-the-ground improvements in line with the stated priorities and making best use of the available funding.
- 3.6 In principle, approval of the Ryder Report subject to modifications will allow Officers to work with the Council's partner organisations to progress from the consultation to the delivery phase of the project and physically improve the park to support the health and wellbeing of the Sandbach community.
- 3.7 A full hard copy of the consultants' report will be made available at the meeting.

4.0 Wards Affected

- 4.1 Sandbach

5.0 Local Ward Members

- 5.1 Councillors Barry Moran, Stella Furlong and Gill Merry.

6.0 Policy Implications including - Climate change - Health

- 6.1 Climate Change: Parks act to mitigate actions that are understood to be causes of climate change. As large green spaces within urban areas, parks slow down surface run-off at times of heavy rain, the vegetation serves to absorb CO₂ and particulates in the air, and the trees have a cooling effect on local air temperatures and will locally reduce the impact of high winds.
- 6.2 Health Benefits: Excellent parks are proven to deliver positive health benefits to the communities who use them or live in their vicinity. They provide places where people can improve their physical health through

recreation and exercise. They are socially cohesive locations where children can play and adults can meet and relax together. They are tranquil places where people of all generations can enjoy the benefits associated with proximity to nature.

- 6.3 Economic Benefits: Well managed and attractive parks will have positive economic benefits. They demonstrate the pride of the local community, the confidence of the local authority, they add value to local property prices and they attract business to the area by supporting the family friendly infrastructure necessary to bring in key employees.

7.0 Financial Implications 2009/10 and beyond (Authorised by the Borough Treasurer)

- 7.1 The funding for this project is already identified from developer contributions under Section 106 of the Town & Country Planning Act. Any other funding will be found by applications to external funding bodies.

- 7.2 There will be no increased revenue funding required.

- 7.3 Officer time will be necessary to drive the project forward but this will be reduced by appointing a project delivery agency. Their fees would have to be raised from the existing budget or from future grant applications.

8.0 Legal Implications (Authorised by the Borough Solicitor)

- 8.1 All improvements to the fabric of the park and all facilities will become assets belonging to Cheshire East Council who will have an ongoing responsibility for maintenance.

- 8.2 Monies paid to the Council under s106 agreements must be used strictly in accordance with the terms of those agreements.

9.0 Risk Management

- 9.1 Risk of harm to park users: the level of risk to park visitors / users should be reduced by the replacement of old and obsolete play equipment and by careful design consideration as to the location of new facilities. Modern play equipment must comply with higher safety standards.

- 9.2 Given that the original concept plan based on consultation with local people would be considerably more expensive than the funding available, there will be a need to manage public expectation in terms of what can be achieved and in what timescale. This will be undertaken through careful use of the media by all parties involved.

10.0 Background and Options

10.1 A comprehensive process has been undertaken to develop an implementation plan to improve Sandbach Park as set out in Section 3 of this report.

10.2 Options:

- (a) To approve 'in principle' the Ryder Landscape Consultants Concept Plan subject to available funding and to the amendment of the Plan as required for operational and financial reasons. Approval of the concept design will allow for the progression of the project and the search for additional funding. As such this option is recommended for approval.
- (b) To reject the Ryder Landscape Consultants report. A considerable amount of officer time and partner funding has been spent on progressing the Plan to its current position. There is no further funding available to develop an alternative proposal. This option is not recommended.

11.0 Access to Information

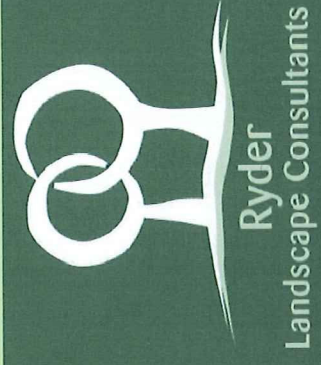
11.1 The background papers relating to this report can be inspected by contacting the report writer:

Name:	Mark Wheelton
Designation:	Leisure & Green Space Manager
Tel No:	01270 686679
Email:	mark.wheelton@cheshireeast.gov.uk

SANDBACH PARK LANDSCAPE PLAN

Stuart Ryder –
Director

Alice Cooper –
Senior
Landscape
Architect



FINAL PRESENTATION – 2010



- What we were asked to do
- What people have said about the park
- Over-riding concepts aims
- Proposals
- What happens next?

FIVE PHASES OF WORK

1. Baseline Survey of the Park
2. Baseline Consultation Study
3. Objective Setting
4. Option Assessment and Draft Concept Plans
5. Public Exhibition and Final Concept Plan

Hesketh Park, Southport Derby Park
Conservation Management Plan, Bootle
Ponciau Banks Park,



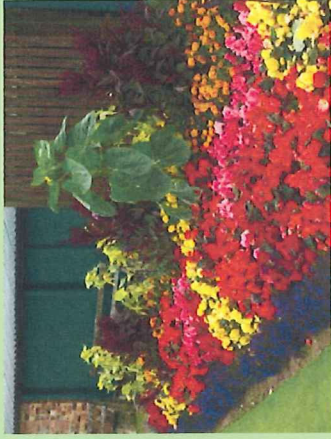
Conservation Management Plan,
Bootle Ponciau Banks Park,
Rhoslanerchrugog Breakwater Country
Park, Holyhead Grosvenor Park, Chester
Leasowe Community Park and
Angling Lake Hazel Grove Park,
Manchester Play Areas, St John's Infants
School and Community Centre Black
Path and Tilery Park, Stockton-on-Tees



THE DESIGNER'S COMMISSION

LIKE MOST PARKS YOU HAVE

The Good ...



The Bad ...



The Tired ...



REASONS FOR VISITING THE PARK

- 15% - For exercise and fresh air
- 12% - For peace, quiet and relaxation
- 12% - To take the children and grandchildren
- 10.5% - To enjoy the plants and flowers
- 10% - On route somewhere else
- 8.5% - To go bowling
- 8% - Visit play areas
- 7.5% - Go to an event in the park
- 6.5% - To walk the dog
- 4.5% - Picnic
- 2.5% - Tennis
- 2% - Casual games of football, rounders, etc



POSITIVES FOR THE PARK

- 15% - Colour and floral displays
- 10% - Bowling facilities
- 8% - Sense of openness and open green space
- 7% - BMX and skate park
- 6% - High standard of maintenance
- 5% - Solitude and peacefulness
- 4% - Toddlers play areas
- 4% - Good place to lunch near town
- 3% - Swings
- 3% - Interesting place to walk
- 2% - Tennis courts
- 2% - A good place to meet friends

Hesketh Park, Southport Derby Park Conservation Management Plan, Bootle
Ponciau Banks Park, Rhoslanerchrugog Breakwater Country Park, Holyhead Grosvenor Park, Chester
Leasowe Community Park and Angling Lake Hazel Grove Park, Manchester Play Areas, St John's Infants School and Community Centre Black Path and Tilery Park, Stockton-on-Tees Blue Hall Allotments and Pigeon Lofts, Stockton-on-Tees **Stanley Park, Liverpool**
Hesketh Park, Southport **Derby Park Conservation Management Plan**, Bootle Ponciau Banks Park, Rhoslanerchrugog Breakwater Country Park, Holyhead Grosvenor Park, Chester
Leasowe Community Park and **Angling Lake** Hazel Grove Park, Manchester Play Areas, St John's Infants School and Community Centre Black Path and Tilery Park, Stockton-on-Tees



NEGATIVES FOR THE PARK

- 15% - Standard of toilet facilities
- 9% - Anti-social behaviour
- 8% - Litter problems and not enough bins
- 6% - Lack of shelter/have a place that's warm
- 5% - Pond area could be better for wildlife
- 5% - Skate park area is ugly
- 4% - Dog waste and methods of management
- 4% - Signs of vandalism
- 3% - Boring, not enough for young people
- 3% - Play area is too small
- 2% - Muddy paths and grass
- 2% - Paths a trip hazard

Hesketh Park, Southport Derby Park
Conservation Management Plan, Bootle
Ponciau Banks Park,
Rhosllanerchrugog Breakwater Country
Park, Holyhead Grosvenor Park, Chester
Leasowe Community Park and Angling
Lake Hazel Grove Park, Manchester Play
Areas, St John's Infants School and
Community Centre Black Path and Tilery
Park, Stockton-on-Tees Blue Hall
Allotments and Pigeon Lofts, Stockton-
on-Tees Stanley Park, Liverpool
Hesketh Park, Southport Derby Park
Conservation Management Plan,
Bootle Ponciau Banks Park,
Rhosllanerchrugog Breakwater Country
Park, Holyhead Grosvenor Park, Chester
Leasowe Community Park and
Angling Lake Hazel Grove Park,
Manchester Play Areas, St John's Infants
School and Community Centre Black
Path and Tilery Park, Stockton-on-Tees



TOP 10 SUGGESTIONS FOR THE PARK

- 1 – Improve toilet facilities (11.1%)
- 2 – Provide more play & teenage facilities (5.8%)
- 3 – Skate Park improvements (5.8%)
- 4 – More play for children 8-12 years (4.6%)
- 5 – Improved and bigger play for all ages (4.5%)
- 6 – Provide open air shelter (4.2%)
- 7 – More play for children 3-5 years (3.5%)
- 8 – Extra lights along the main paths (3.2%)
- 9 – Cafe / Ice Cream Stall (2.7%)
- 10 – Place for music and other events (2.5%)

Hesketh Park, Southport Derby Park Conservation Management Plan, Bootle **Ponciau Banks Park**, Rhosllanerchrugog Breakwater Country Park, Holyhead Grosvenor Park, Chester Leasowe Community Park and Angling Lake Hazel Grove Park, Manchester Play Areas, St John's Infants School and Community Centre Black Path and Tilery Park, Stockton-on-Tees Blue Hall Allotments and Pigeon Lofts, Stockton-on-Tees **Stanley Park, Liverpool Hesketh Park**, Southport **Derby Park Conservation Management Plan**, Bootle **Ponciau Banks Park**, Rhosllanerchrugog Breakwater Country Park, Holyhead Grosvenor Park, Chester **Leasowe Community Park and Angling Lake** Hazel Grove Park, Manchester Play Areas, St John's Infants School and Community Centre Black Path and Tilery Park, Stockton-on-Tees



MARKS OUT OF 10 FOR THE PARK

- 0 – 0.5%
- 1 – 0.5%
- 2 – 1.4%
- 3 – 3.6%
- 4 – 8.6%
- 5 – 5%
- 6 – 21%
- 7 – 28.9%
- 8 – 22.4%
- 9 – 3.6%
- 10 – 3.6%

80% of all people asked marked the park as 6 or higher

Hesketh Park, Southport Derby Park Conservation Management Plan, Bootle Ponciau Banks Park, Rhosllanerchrugog Breakwater Country Park, Holyhead Grosvenor Park, Chester Leasowe Community Park and Angling Lake Hazel Grove Park, Manchester Play Areas, St John's Infants School and Community Centre Black Path and Tilery Park, Stockton-on-Tees Blue Hall Allotments and Pigeon Lofts, Stockton-on-Tees Stanley Park, Liverpool Hesketh Park, Southport Derby Park Conservation Management Plan, Bootle Ponciau Banks Park, Rhosllanerchrugog Breakwater Country Park, Holyhead Grosvenor Park, Chester Leasowe Community Park and Angling Lake Hazel Grove Park, Manchester Play Areas, St John's Infants School and Community Centre Black Path and Tilery Park, Stockton-on-Tees



IN SUMMARY

- Keep the positive elements that people enjoy.
- Remove (within reason) the negative elements that people do not like.
- Improve those elements that people do not value or do not recognise have a value.
- Only bring new features to the park if they are going to improve the park for people.
- In general people were happy with the park but recognise it could be improved.

CONCEPT PLAN AIMS - Summary

- 1 – Buildings in the Park
- 2 – Play and recreation
- 3 – Improved signage and orientation
- 4 – Historical reference
- 5 – Circulation improvements
- 6 – Lighting
- 7 – Quality of park furniture
- 8 – Park entrances and boundary treatment
- 9 – Lower Park – woodland and pond improvements
- 10 – Ensure long-term sustainability

Hesketh Park, Southport Derby Park Conservation Management Plan, Bootle **Ponciau Banks Park**, Rhosllanerchrugog Breakwater Country Park, Holyhead Grosvenor Park, Chester Leasowe Community Park and Angling Lake Hazel Grove Park, Manchester Play Areas, St John's Infants School and Community Centre Black Path and Tilery Park, Stockton-on-Tees Blue Hall Allotments and Pigeon Lofts, Stockton-on-Tees **Stanley Park, Liverpool Hesketh Park**, Southport **Derby Park Conservation Management Plan**, Bootle Ponciau Banks Park, Rhosllanerchrugog Breakwater Country Park, Holyhead Grosvenor Park, Chester **Leasowe Community Park and Angling Lake Hazel Grove Park**, Manchester Play Areas, St John's Infants School and Community Centre Black Path and Tilery Park, Stockton-on-Tees



CONCEPT PLAN AIMS



SANDBACH PARK

initial concept plan



DRAWING NOT TO SCALE

SANDBACH PARK

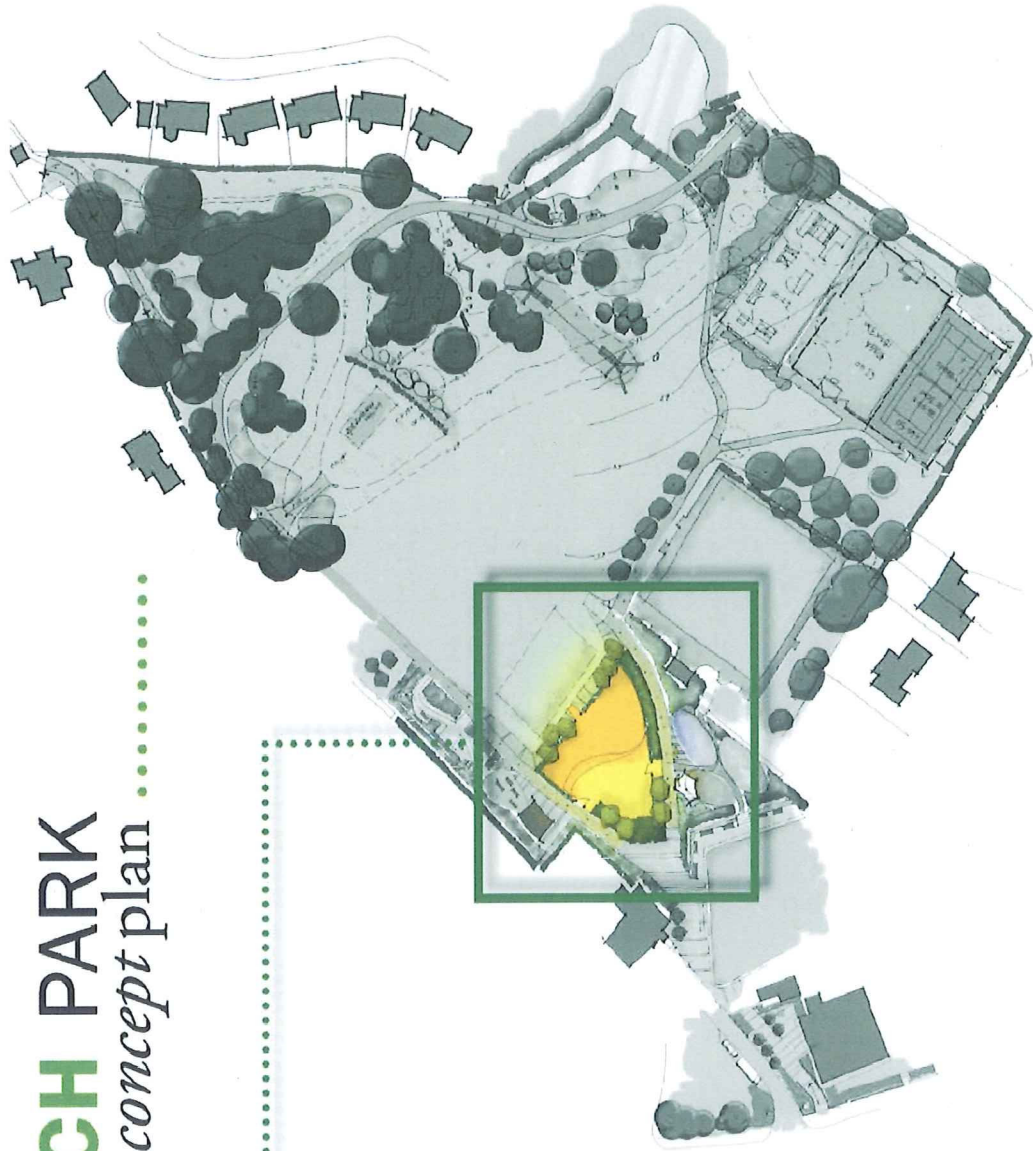
developed concept plan



SANDBACH PARK

concept plan

Adventure play area.....

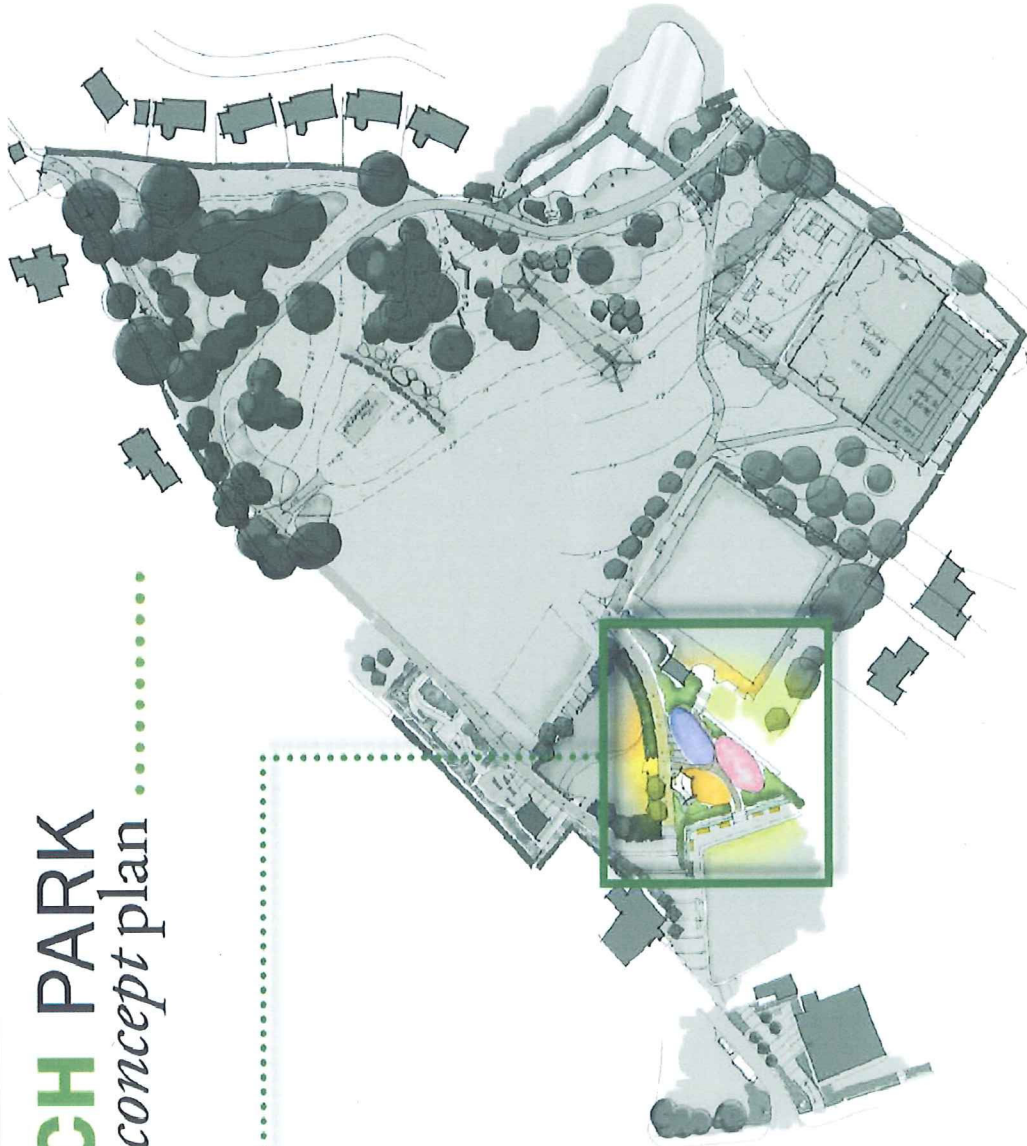




SANDBACH PARK

concept plan

Toddler play area



SANDBACH PARK

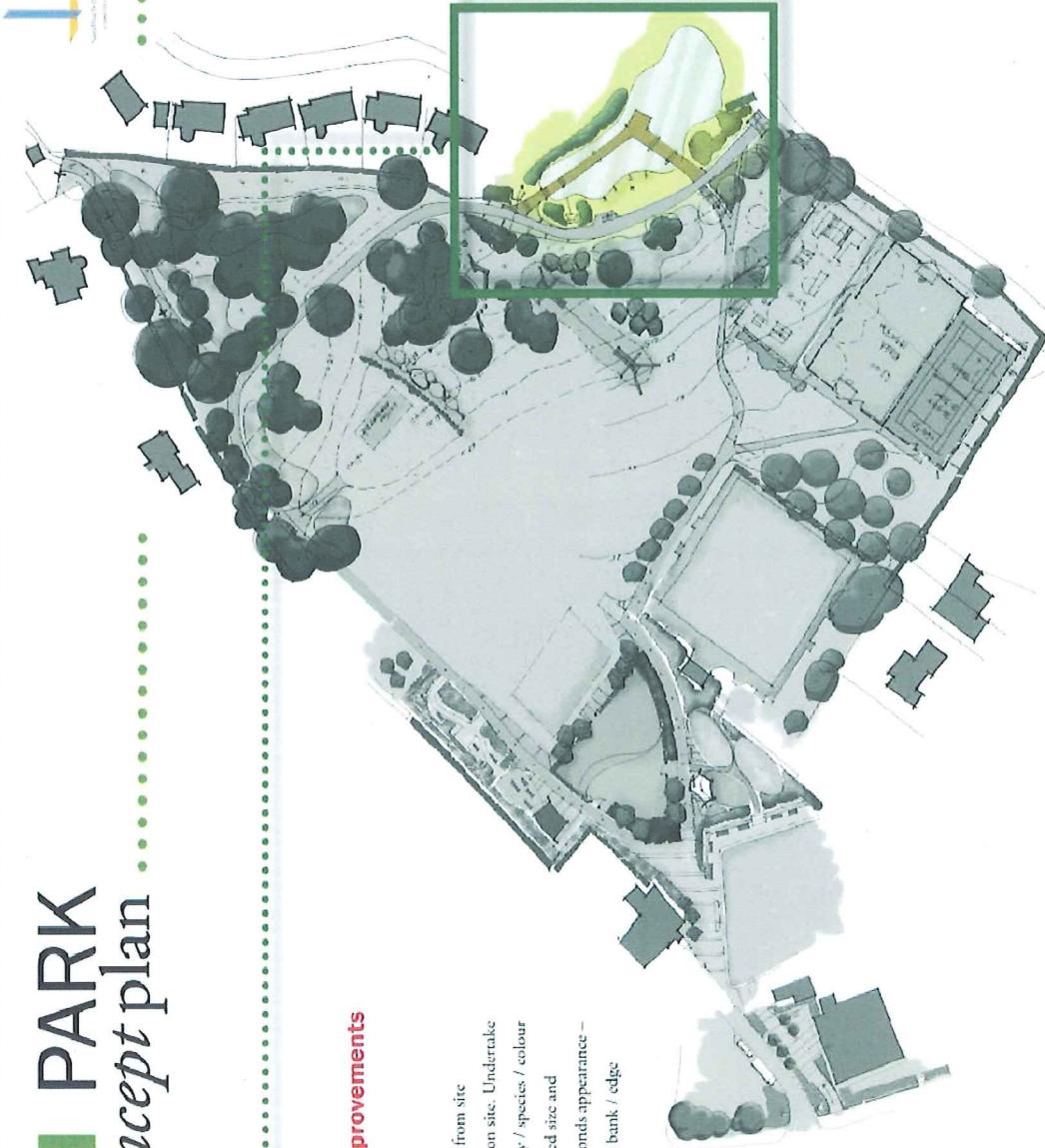
concept plan

Pond and woodland area

Essential Priority items - Ecological Improvements

1.17 POND, WETLAND AREA

- 1.17.1 Remove existing timber jetty and gravel. Dispose from site
- 1.17.2 Diversify the native/ ecological wetland planting on site. Undertake management of vegetation to increase biodiversity / species / colour
- 1.17.3 Excavate and extend area of open water – increased size and undertake dredging to increase depth. Improve ponds appearance – rubbish clearance and create gently shelving grass bank / edge
- 1.17.4 Provide access path down to the water's edge to feed the wildlife
- 1.17.5 Timber boardwalk and pond dipping platform
- 1.17.6 Increase peoples' understanding of the park's natural features through effective interpretation. Interpretation board fixed to boardwalk for school educational visits - pond / leicern (1 nr.) and inclusion into the Sandbach Environmental trail (A Rocha Charity publication)
- 1.17.7 Undertake Wildlife habitat improvement works recommended by Cheshire Wildlife Trust

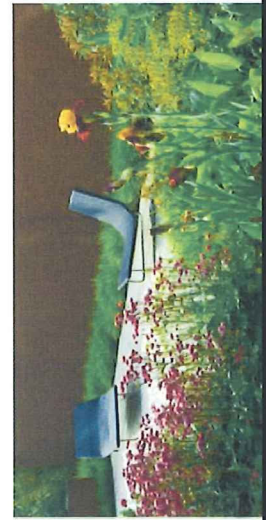
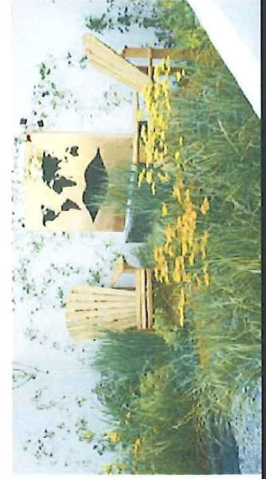
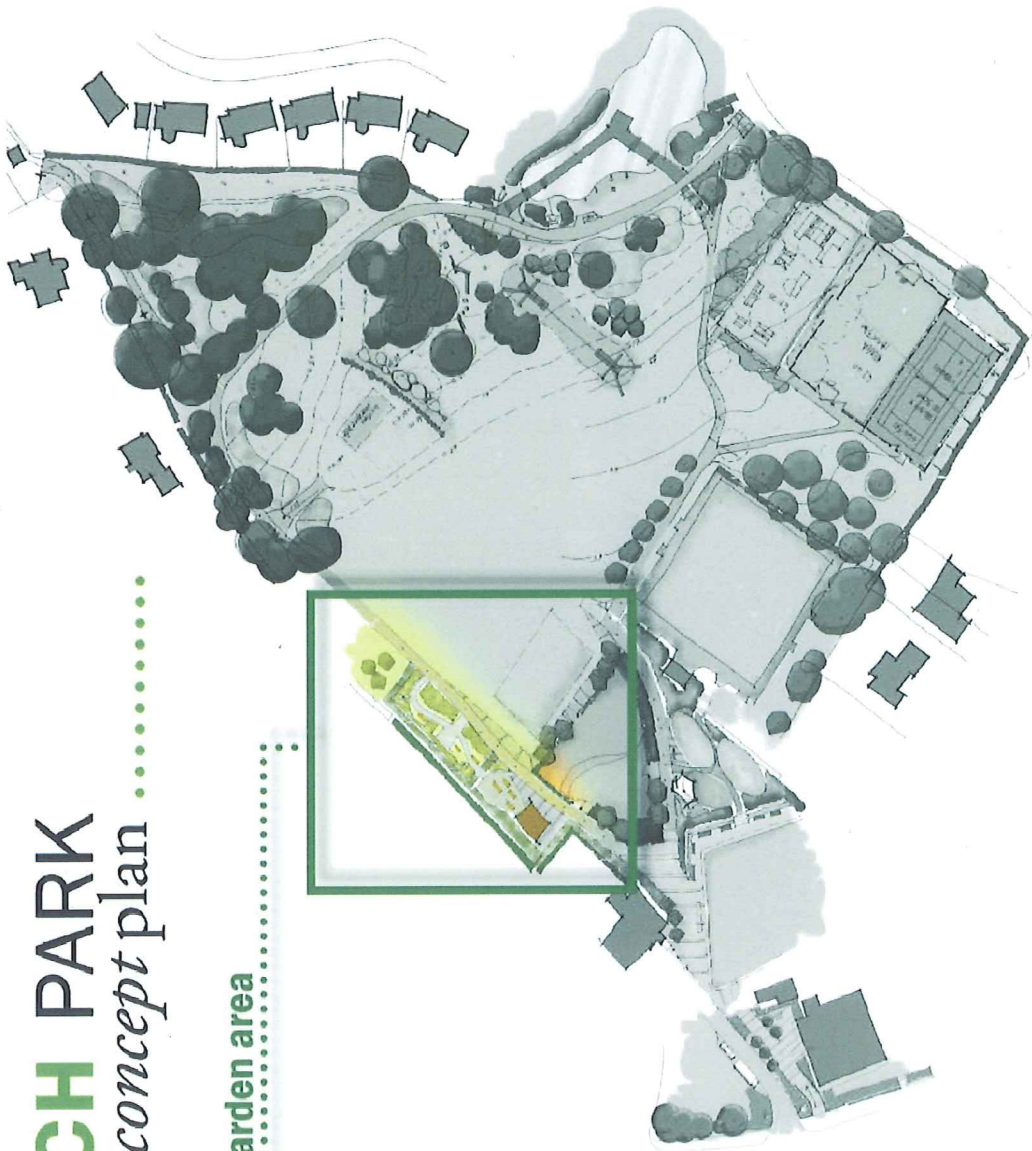




SANDBACH PARK

concept plan

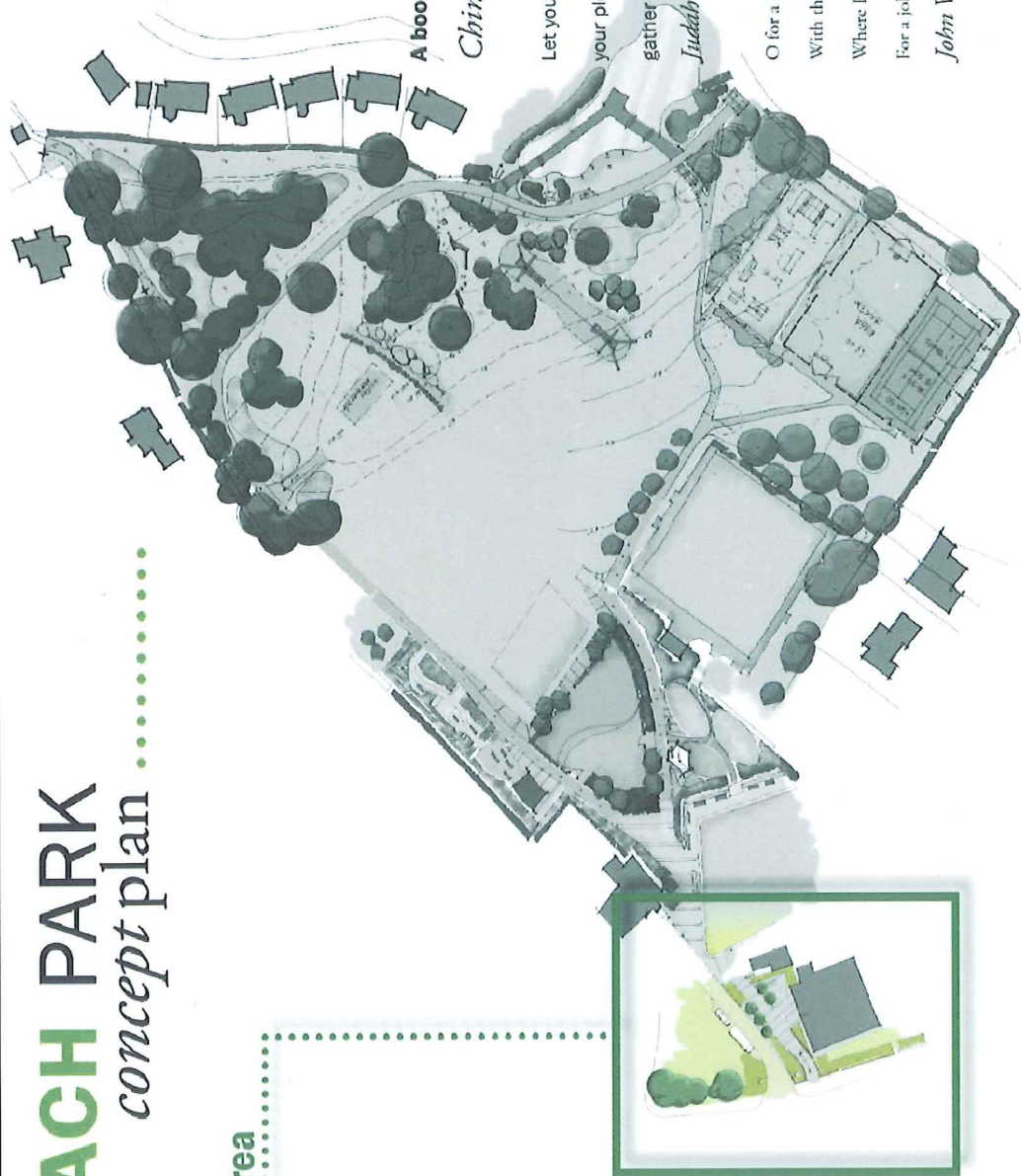
Cafe and Roy Sutton garden area



SANDBACH PARK

concept plan

Library entrance area



A book is like a garden carried in the pocket
Chinese Proverb

Let your bookcases and your shelves be your gardens and
your pleasure-grounds. Pluck the fruit that grows therein.
gather the roses, the spices, and the myrrh.

Juddah Ibn Tibbon

O for a Booke and a shadie nooke, eyther in-a-doore or out;
With the grene leaves whisp'ring overhede, or the Streete cries all about.
Where I maie Reade all at my case, both of the Newe and Olde;
For a jollie goodie Booke whereon to lookee is better to me than Golde.

John Wilson



SANDBACH PARK

concept plan

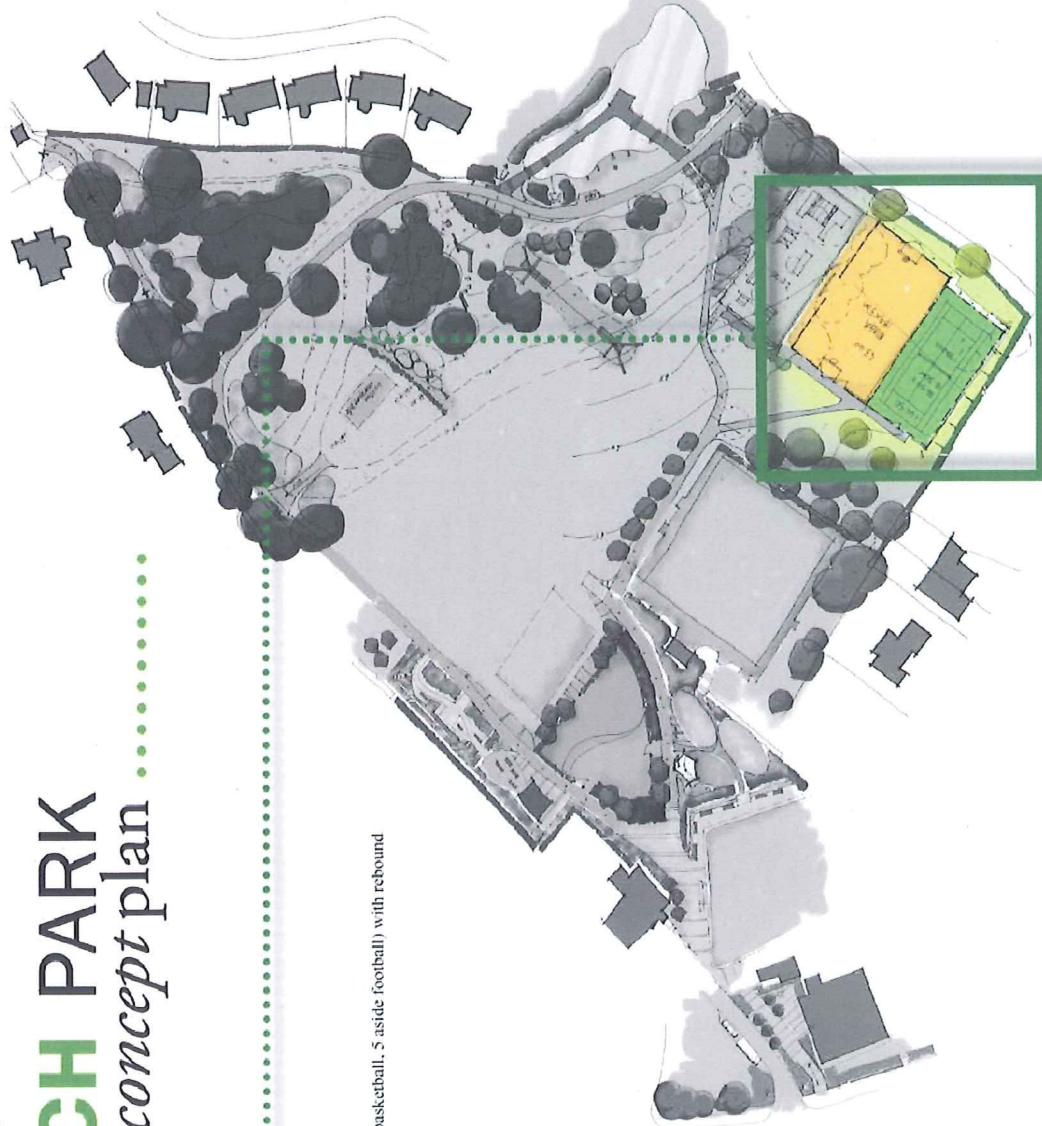
MUGA /tennis area

Teenager Sport - Concept Proposals

Provision of Multi use games arena (netball, tennis, basketball, 5 aside football) with rebound fencing and separate tennis court

Indicative equipment

- Artificial grass Tennis Court
- MUGA (Multi User Games Area)
- 12275 Small ball courts or 12285 Large ball court
- Free standing football net



Essential Priority Items - Recreational Facilities

1.13 MUGA - MULTI COURT (NETBALL, TENNIS,

BASKETBALL, 5 ASIDE FOOTBALL*) COMBINATION

- 1.13.1 Remove existing wire mesh panels and posts surrounding tennis court, dispose from site
- 1.13.2 Retain tennis court and extend perimeter to include multi-games ball court
- 1.13.3 Install new welded mesh panel and post to perimeter
- 1.13.4 Retaining wall and kickboard perimeter boundary treatment
- 1.13.5 Lay coloured armale surfacing
- 1.13.6 Install Goal post/ Netball / Basketball hoop freestanding unit
- 1.13.7 Tennis court nets and posts
- 1.13.8 Paint multi-game court lines
- 1.13.9 Install 4 nr. New seats
- 1.13.10 New Tennis Court*
- 1.13.11 New posts and wire mesh fencing to perimeter
- 1.13.12 Artificial turf surfacing
- 1.13.13 Repaint white lines
- 1.13.14 1 nr. Set of court net and posts
- 1.13.15 Install 4 nr. new seats and 2 nr. benches



SANDBACH PARK

concept plan

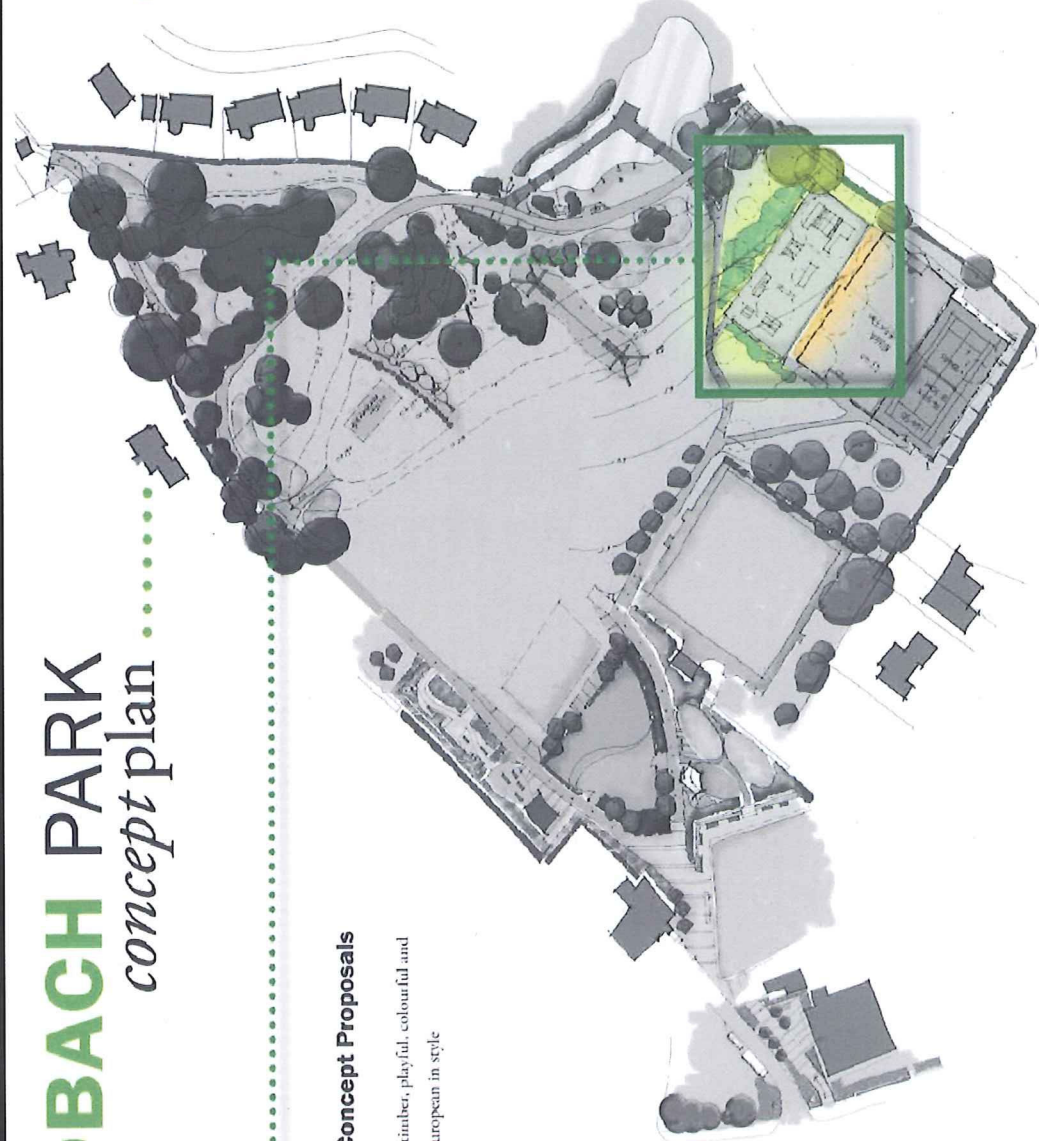
Skate park

Teenager Sport - Concept Proposals

Stainless steel, red rope, square timber, playful, colourful and bright and contemporary and european in style

Indicative equipment cont:

- Gravity Skate Park Ltd
- Skated BMX park



1.12 NEW SKATE/ BMX PARK AND TEENAGER FOCUSED FACILITIES

Provide informal and casual 'kick about / basket ball areas' for young people. The areas are to be for young people to use without any need for changing facilities and without the need for booking the facilities.

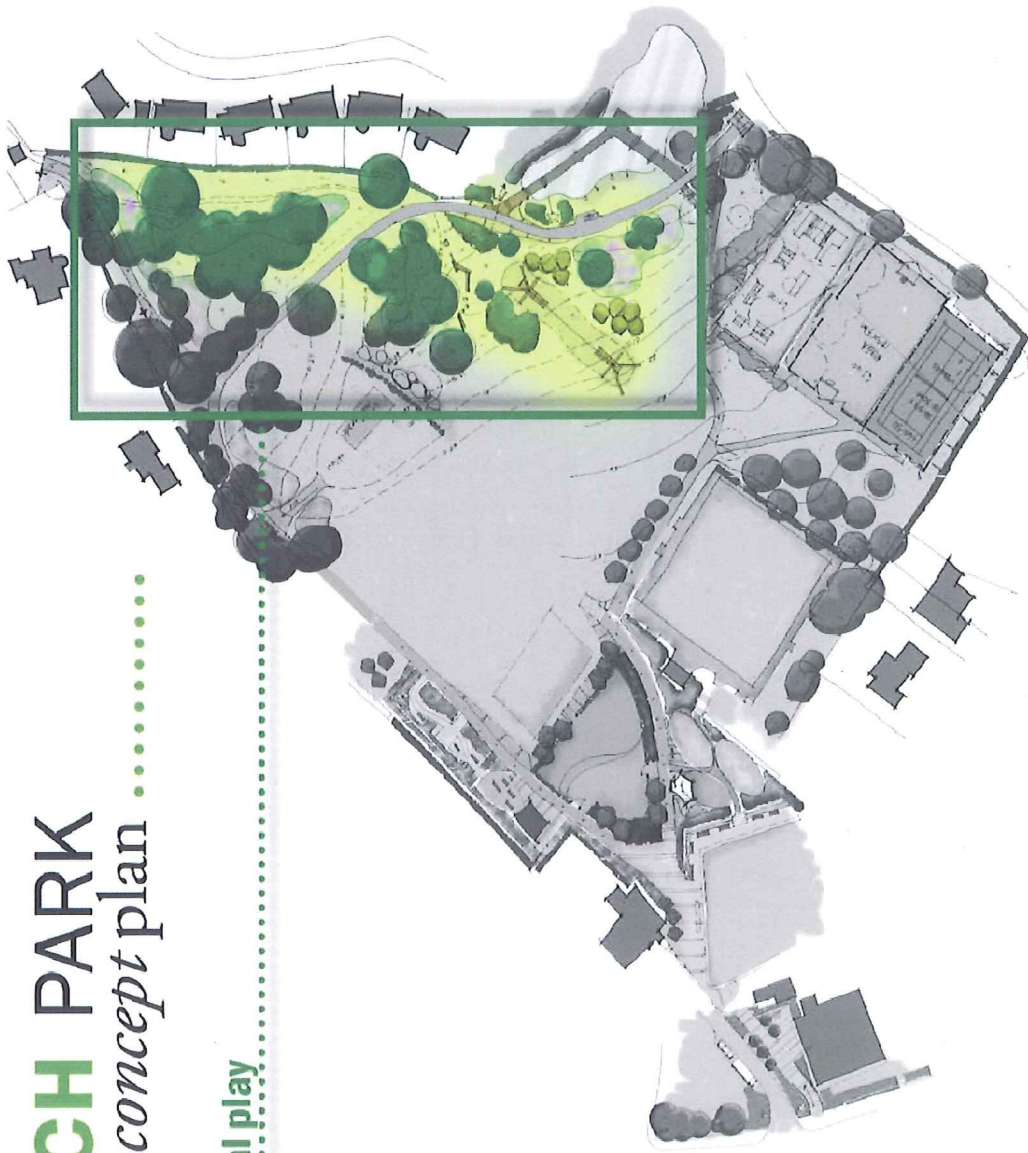
Items shown with * denote specific requests received from the community during the consultation process

- 1.12.1 Remove existing skate ramp and surfacing*
- 1.12.2 Open sided shelter* – shelter from the elements
- 1.12.3 Emergency vehicle access
- 1.12.4 Skate facility to be positioned to have an open aspect and not shaded by trees - For safety reasons there is a need to avoid leaves and debris falling on skate surface*
- 1.12.5 Re-align, re-grade and widen the existing tarmac footpath to remove steps
- 1.12.6 Entry level skate / BMX arena (located away from older teenagers)
- 1.12.7 Easy grade ramps (to suit 9-12 year olds)*
- 1.12.8 2m half pipe*
- 1.12.9 Better quality ramp surfacing (steel/wood or skatelite) or moulded concrete basin*
- 1.12.10 In-line skate circuit
- 1.12.11 Layout to promote a linked skating route / circuit
- 1.12.12 Flat area of tarmac hard standing – to practice tricks and moves
- 1.12.13 Install 2 nr. new benches
- 1.12.14 Intermediate / advanced level skate / BMX arena
- 1.12.15 Harder / progressive grade ramps for developing mountain boarding, skateboarding and BMX riding skills*
- 1.12.16 quarter pipe and roll-in tower (in addition to take-off, 'kicker' and landing ramps)*
- 1.12.17 big air ramp*
- 1.12.18 skateboard mini/half pipe ramp*
- 1.12.19 Increase in the number of ramps and ramps to be wider in size*
- 1.12.20 Better quality ramp surfacing / type of equipment or moulded concrete basin*
- 1.12.21 Flat area of tarmac hard standing – to practice tricks and moves
- 1.12.22 Install 2 nr. new benches

SANDBACH PARK

concept plan

PLAYBUILDER - natural play



SANDBACH PARK

concept plan



PLAYBUILDER
PLAY/ECOLOGICAL
AREA
1:500 SCALE





SANDBACH PARK

improvement project

Trim Trail - Fitness And P.T. Trail

STRATEGY - INDICATIVE LAYOUT

A Individual pieces of equipment stations

..... Fitness route

Trim trail equipment - indicative

UPPER BODY EXERCISE

3.6 x 1.0m 2.6m horizontal ladder
2.6 x 1.0m Clin ups

LOWER BODY EXERCISE

3.6 x 1.5m Bench sit ups
6 x 1.5m Bunny hops

CLIMBING AND JUMPING, BALANCE, CO-ORDINATION

1.8 x 1.7m Run and leap timbers
3.2m beam x 3 balance beam
2.8 x 0.5m Net climb
1.5/7.5 x 0.5m Leap frog posts or 8 posts, varying heights 0.85 - 1.2m



Drawing not to scale

SANDBACH PARK

improvement project



Life-long Health and Recreation

Stainless steel, red rope, square timber, playful, colourful and bright and contemporary and european in style

Indicative equipment cont:

- [Sports Equipment.com](http://SportsEquipment.com)
- PT trim / Fitness trim rails- 8 m; individual timber pieces. Placed throughout the woodland and adjacent to paths to form a loop circuit
- horizontal ladder
- chin ups
- bench sit ups
- bunny hops
- run and leap timbers
- net climb
- leap frog posts (8 m)
- balance beam (low level)



Lower Park - Woodland Area



Essential Priority Items - Ecological Improvements

1.16 LOWER PARK AND WOODLAND

- 1.16.1 Introduce areas of ground cover/ low growing native planting to provide seasonal variety, reflect light and add colour beneath the woodland canopy to the woodland walk throughout the year
- 1.16.2 Wildflower plug planting on slopes*
- 1.16.3 Protect areas of existing Bluebell planting
- 1.16.4 Diversify the tree stock for greater arboreal interest and age range in the park. Undertake programme of Arboretum style specimen tree planting to increase diversity and replace trees removed.
- 1.16.5 Develop the concept of SANDBACH Arboretum with tree trails and self-guide or download information
- 1.16.6 Creation of seasonal gardens of bulbs and flowering plants at the path nodes

FULL SHADE

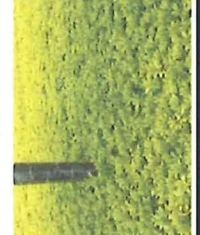
Alchemilla mollis
Epimedium x rubrum
Epimedium grandiflorum 'Lilace'
Epimedium x youngianum 'Niveum'
Tellima grandiflora 'Purpurea'
Aquilegia vulgaris 'Manicard White'
Hedera helix iberrima

PARTIAL SHADE

Pachysandra terminalis
Lamium maculatum 'Beacon Silver'
Brunnera macrophylla 'Jack Frost'
Galium odoratum
Viola major 'Ersfolia'
Pulmonaria 'Cotton Cool'

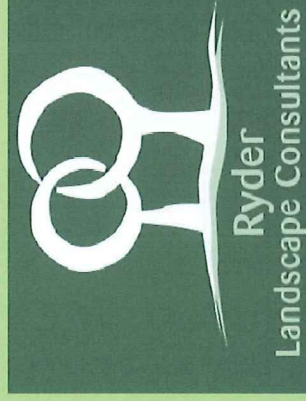
BULBS

Crocus vernus 'Pickwick'
Anemone nemorosa
Hyacinthoides non-scripta
Narcissus pectadnarcissus 'lobularis'



REVIEW OF INITIAL PLANS

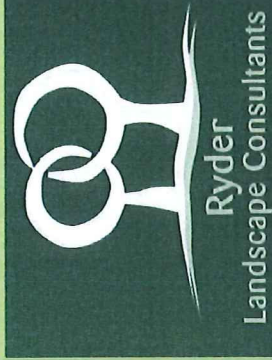
- Public exhibition held
- Presentation to Sandbach Town Council
- Discussed at length by Sandbach Partnerships
- There were 22 points of addition
- There were 16 requests that were not included
- Changes to the spatial arrangement of the proposals are shown outlined in red on next plan
- They are all clearly recorded in a document called Changes Implications and Action Plan



finalised concept plan

DELIVERY OF A £400,000 SCHEME

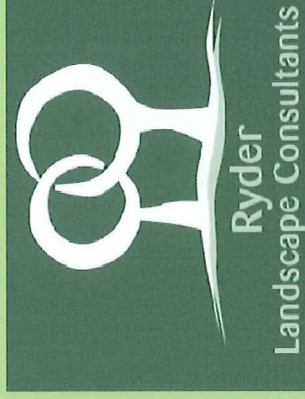
- Section 106 monies of £128,000
- There is a commitment from Cheshire East Council to provide £20,000 from capital funds for the toilet improvement project
- Key items as we see it are:
 - a. Toilet, baby change and disabled WC -£69,000
 - b. Improved vehicular access - 6,000
 - c. Paths and circulation works - £76,000
 - d. Skate Park and active play - £128,000
 - e. Toddler play area - £69,000
 - f. Adventure play - £102,000
 - g. Park furniture - £49,000



LOOKING TO THE FUTURE

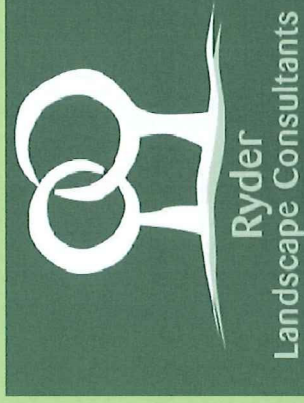
DELIVERY OF A £1,000,000 SCHEME

- All the previous items, plus the following
- Key items as we see it are:
 - a. Lighting and a new CCTV camera - £55,000
 - b. MUGA and Tennis Courts - £81,000
 - c. Trim Trail - £6,000
 - d. Cafe Base and Gardens - £51,000
 - e. Signage Improvements - £21,000
 - f. Pond and Woodland Improvements - £47,000
 - g. Enabling events and ground levelling - £118,000
 - h. Amenity and Ornamental Planting - £82,000
 - i. Library Entrance Upgrade - £50,000
 - j. Additional maintenance/miscellaneous - £8,000



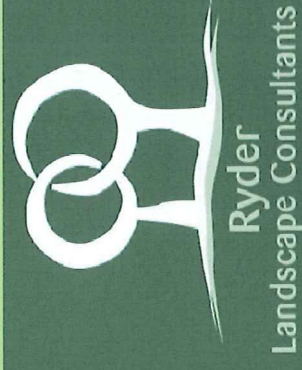
WHAT HAPPENS NEXT?

- There are two potential schemes have been costed.
- There is now the ammunition to tackle potential funders with.
- A raft of such funders have been identified.
- Form a funding committee.
- Tackle the most likely funds first.
- Look upon the park as a back-drop for other activities e.g. Health, fitness, wildlife, education etc.
- Use the Section 106 money to act as your match funding.
- Form a Friends of Sandbach Park to keep its profile high and assist with funding applications.
- Review the masterplan at least annually to consider new opportunities and mark successes!



IN SUMMARY

- We have shown you a lot tonight
- There is a lot to take in
- This is just the 'end of the beginning'
- The Park will be different to these proposals
- Look upon this work as a framework to take advantage of funding opportunities
- Funding is now the major challenge
- Match funding tends to be the key – use S106
- These proposals will demonstrate to funders you mean business
- Continue with engagement and empowerment of local people to reach balanced decisions
- Encourage more people to the Park to make it a special place in Sandbach.



A GOOD START

This page is intentionally left blank